



# CFX 75 P

## 1" x 1" End Suction Centrifugal Pump

The CFX 75 P End Suction Centrifugal Pump is a precision-engineered solution designed for demanding fluid transfer tasks across marine, agricultural, commercial, and industrial applications. Built for consistent performance and efficiency, this pump ensures dependable operation in diverse environments.

Manufactured from polyphenylene sulfide (PPS), the CFX 75 P offers outstanding resistance to corrosion, making it suitable for a broad spectrum of compatible fluids. Its semi-open impeller, crafted from sintered PM and 316 stainless steel, delivers durability and reliable functionality even under harsh conditions.

A key advantage of this model is its carbon/ceramic/Viton bellows shaft seal, which provides a secure and long-lasting seal. The pump features 1-inch hose connections and allows 90° rotational adjustments, enabling flexible installation to meet various system requirements.

For marine applications, ignition-protected motors are available to ensure safe operation. Additionally, the pump is rated for temperatures up to 220°F (104°C), making it an excellent choice for high-temperature processes.

### SPECIFICATIONS:

<b>Port Sizes</b>	1" Hose Connections
<b>Impeller</b>	316 Stainless steel, Semi-Open (Sintered PM)
<b>Motor</b>	115VAC, ODP and TENV 12VDC 24VDC
<b>Seal</b>	Special seals upon request, Standard carbon/ceramic/Viton Bellows 150 PSI (10 bar)
<b>Cover</b>	Polyphenylene Sulfide
<b>O Ring</b>	Viton, EPDM
<b>Housing</b>	Polyphenylene Sulfide
<b>Temperature</b>	To 220°F (104°C)
<b>Weights</b>	Pump W/AC Motor 13 lbs. (5.9 kg) Pump W/DC Motor 7.5 lbs. (3.4 kg)
<b>Head Feet</b>	Up to 30' (9 m)

### Application:

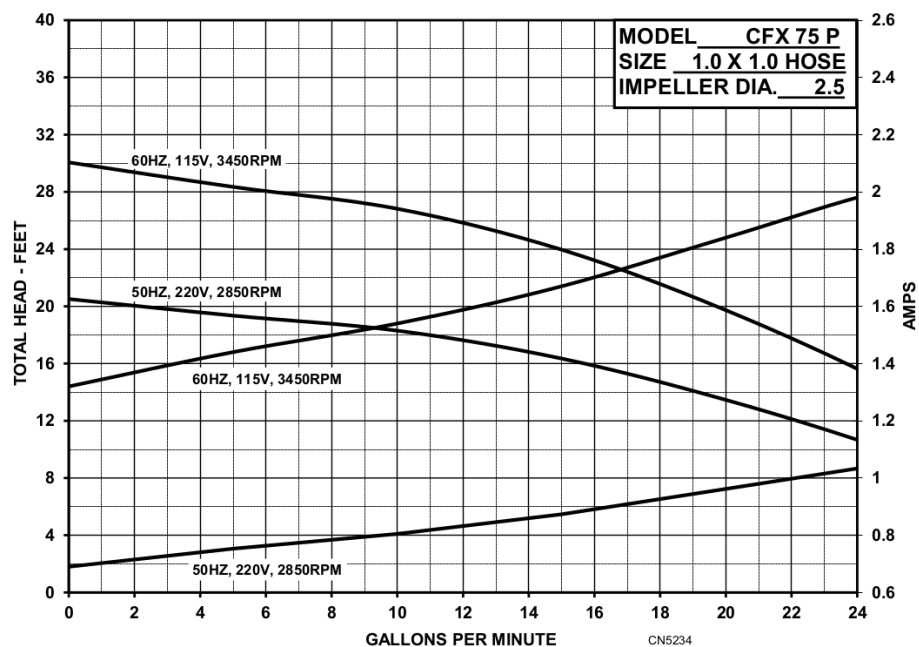
- Agricultural
- Commercial
- Industrial
- Marine



An Ingersoll Rand Business

# CFX75 P

## PERFORMANCE CURVES



12500 South Pulaski Road  
Alsip, IL 60803, USA  
Phone (800) 563-8006

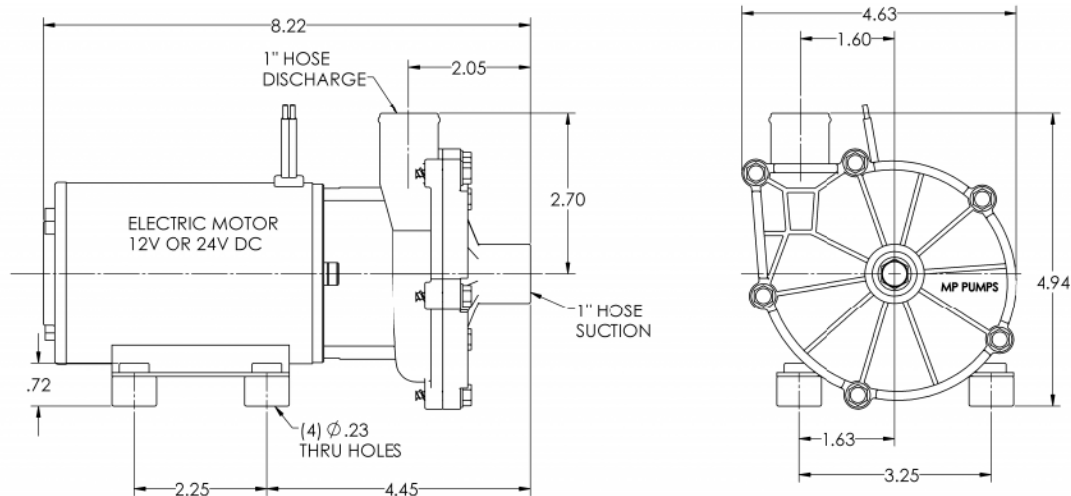


An Ingersoll Rand Business

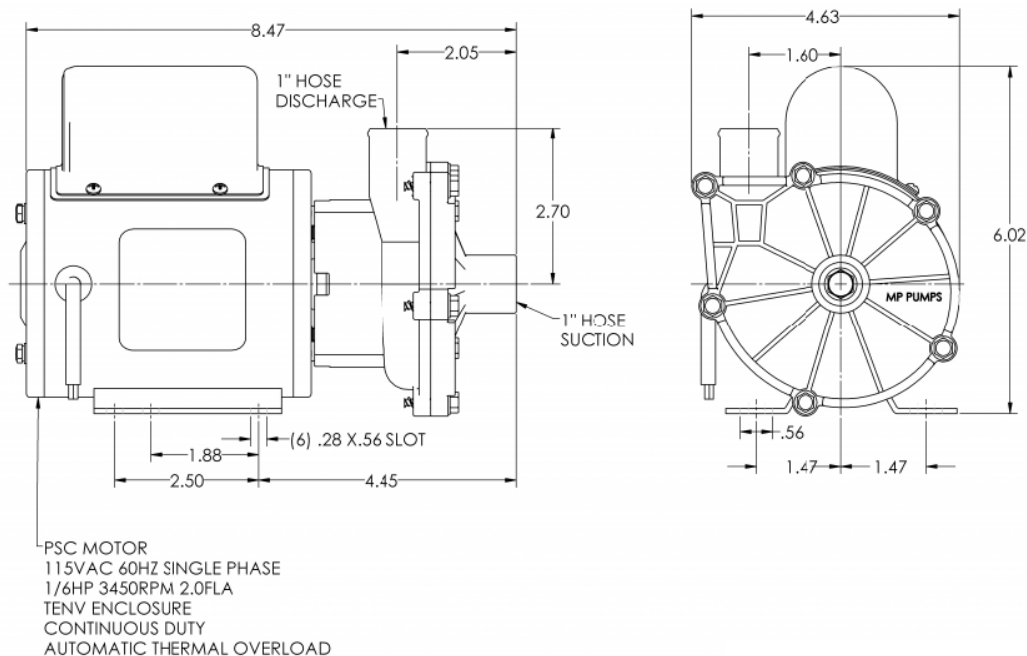
# CFX75 P

## DIMENSIONS

### CFX75 P with DC Motor



### CFX75 P with AC Motor



\* For complete parts lists and troubleshooting guidance, please refer to the MP Pumps Installation Operation & Maintenance (IOM) Manual.



12500 South Pulaski Road  
Alsip, IL 60803, USA  
Phone (800) 563-8006